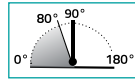


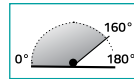
EVO

EV 835E10N



EVO

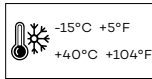
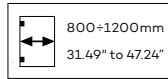
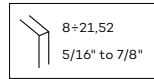
EV 835E11N



MAX 120 Kg - 264 lbs



Porte - Doors



• Cerniera oleodinamica vetro-muro per porte in battuta, con velocità di chiusura regolabile e controllo costante di frenatura; permette un'apertura della porta fino a 180°. Si installa su porte con profilo in battuta. Profondità stipite da 30 a 50 mm.

• Hydraulic hinge glass to wall for doors with stop, with adjustable closing speed and constant braking control; the door opens up to 180°. Installed on doors with a profile on a stop. Jamb depth from 30 to 50 mm.

EV 835E10N R = destra - right

EV 835E10N L = sinistra - left

EV 835E11N R = destra - right

EV 835E11N L = sinistra - left



Alluminio / Aluminium: 02-05-13-14-15-16-17-RAL-62-88-95



Per installazioni in condizioni ambientali e climatiche particolari (es. Umide, acide, saline), consultare prima l'ufficio commerciale

For installations in particular environments or climate (ex. Wet, acid, saline) consult sales office first



È necessaria una battuta in chiusura in quanto la cerniera ha una precarica.

The hinge is preloaded which makes an end stop necessary.

Classificazione secondo normativa - Clasificación según la ley - Classification according to inf1 regulation Klassifizierung nach den Vorschriften - Classification selon la norme				
UNI EN 1154 : 2006	3	8	3/6	0 1 4

